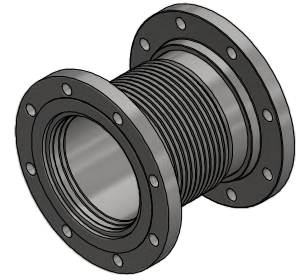
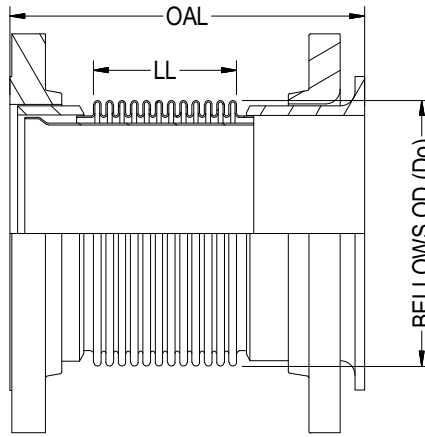


# TYPE SU-36



ISOMETRIC VIEW

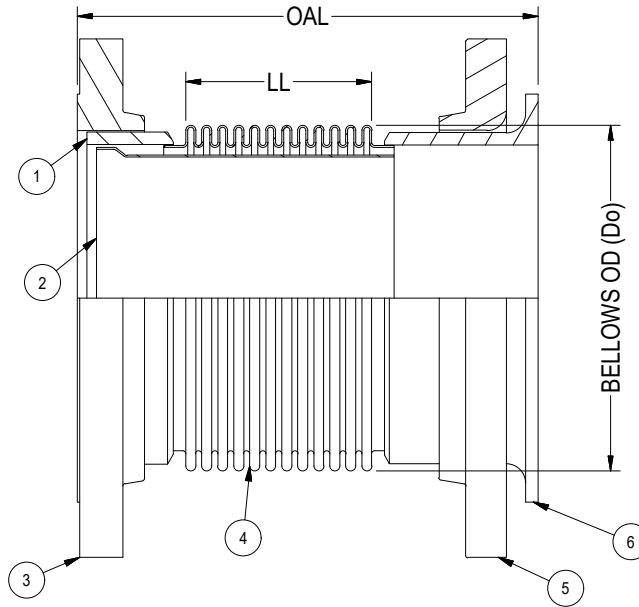
PIPE SIZE	BELLOWS OD (Do)	LIVE LENGTH (LL)	OVERALL LENGTH (OAL)
1	1.50	1.83	6.00
1.25	1.80	1.80	6.00
2	2.50	7.05	12.00
2	2.47	11.08	16.00
2	2.40	15.11	20.00
2.5	3.00	1.88	7.00
2.5	3.00	6.92	12.00
2.5	3.00	10.89	16.00
2.5	3.00	14.90	20.00
3	3.80	1.75	7.00
3	3.75	6.85	12.00
3	3.75	10.76	16.00
3	3.75	14.78	20.00
3.5	4.40	1.29	7.00
3.5	4.40	6.23	12.00
3.5	4.40	10.17	16.00
3.5	4.40	14.13	20.00
4	4.95	1.24	7.00
4	4.95	6.19	12.00
4	4.95	10.12	16.00
4	4.80	14.17	20.00
5	5.80	1.13	7.00
5	5.80	6.12	12.00
5	5.80	10.07	16.00
5	5.80	14.04	20.00
6	7.00	5.44	12.00

PIPE SIZE	BELLOWS OD (Do)	LIVE LENGTH (LL)	OVERALL LENGTH (OAL)
6	7.00	9.48	16.00
6	7.00	13.34	20.00
8	9.00	4.84	12.00
8	9.00	8.78	16.00
8	9.00	12.73	20.00
10	11.00	3.65	12.00
10	11.00	7.63	16.00
10	11.00	11.57	20.00
12	13.00	2.36	12.00
12	13.00	6.34	16.00
12	13.00	10.33	20.00
14	14.13	2.26	12.00
14	14.13	6.28	16.00
14	14.13	10.28	20.00
16	16.50	1.95	12.00
16	16.50	6.01	16.00
16	16.50	10.04	20.00
18	18.50	1.79	12.00
18	18.50	5.84	16.00
18	18.50	9.86	20.00
20	20.50	1.63	12.00
20	20.50	5.65	16.00
20	20.50	9.67	20.00
24	24.50	1.33	12.00
24	24.60	5.30	16.00
24	24.80	9.31	20.00

NOTES:

1. FLANGES ARE OF 300# RFSO. (ANSI B16.5 BOLT PATTERN)
2. FLANGE MATERIAL: ASTM A-105. FOR OTHER OPTIONAL MATERIAL PLEASE CONTACT BSI.
3. PIPE WELD END WALL THICKNESS IS BASED ON STD./SCH. ALTERNATIVE SIZES AVAILABLE ON REQUEST.
4. PIPE END MATERIAL: ASTM A106 B. FOR OTHER OPTIONAL MATERIAL PLEASE CONTACT BSI.
5. LAP JOINT STUB END MATERIAL: ASTM A-36. FOR OTHER OPTIONAL MATERIAL PLEASE CONTACT BSI.
6. OAL IS BASED ON LIVE LENGTH. FOR OTHER OPTIONAL LENGTH PLEASE PROVIDE THEM IN THE SPECIFICATION SHEET.
7. BELLOW MATERIAL: ASTM A-240 GRADE 304. OTHER MATERIALS (STAINLESS STEEL, NICKEL ALLOYS ETC. ) ARE AVAILABLE ON REQUEST.
8. AVAILABLE IN 1 PLY, 2 PLY (STD) OR 3 PLY DESIGNS.
9. SPECIFY DESIGN/OPERATING PRESSURE & TEMPERATURE IN PAGE 2.
10. FOR MOVEMENTS AND LIFE CYCLE REFER TO BELLOWS CATALOG OR CONTACT BSI ENGINEERING.

				 <b>Bellows Systems</b>		<b>BELLOWS SYSTEMS, INC.</b> Houston, TX <a href="http://www.bellows-systems.com">www.bellows-systems.com</a>	
						SINGLE EXPANSION JOINT STD. TYPE SU-36 W/ LINER, 300#RFSO, FIXED & FLOATING FLG	
F	UPDATED TYPE NO.	11/8/2023	UG	CAGE CODE: 22727			
E	UPDATED NOTES	09/12/2023	UG				
REV.	DESCRIPTION	DATE:	BY:	CHKD:	APPD:	DRAWING NUMBER: 130-CAT-0036	SHEET#: 1 OF 2
THIS DRAWING AND ALL OF THE INFORMATION HEREIN ARE THE SOLE PROPERTY OF BELLOWS SYSTEMS, INC. AND MAY NOT BE REPRODUCED OR DISTRIBUTED WITHOUT THE EXPRESS WRITTEN CONSENT OF BELLOWS SYSTEMS, INC. (BSI).				SHEET SIZE: 8.5" x 11"		DRAWN BY: U GULATI	
				DATE: 03/13/2023		SCALE: AS SHOWN	
						REV. F	



		1	2	3	4
<b>DIM.:</b>	PIPE/ NOMINAL SIZE:				
	OVERALL LENGTH (OAL):				
<b>DESIGN:</b>	PRESSURE:				
	TEMPERATURE:				
<b>MOV. &amp; LIFE CYLS:</b>	AXIAL COMPRESSION:				
	AXIAL EXPANSION:				
	LATERAL:				
	ANGULAR:				
<b>MAT'L'S.:</b>	① PIPE END:				
	② LINER:				
	③ FLANGE:				
	④ BELLOWS:				
	⑤ LAP JOINT FLANGE:				
	⑥ STUB END:				
<b>DESIGN CODES/STANDARDS:</b> (EJMA/ ASME SECT VII DIV I/ ASME B 31.1/ ASME B 31.3)					
<b>APPLICATION NOTES:</b>					
<b>QUANTITY:</b>					

- OPTIONAL FEATURES:**
- WITHOUT FLOW LINER (SEE TYPE-06).
  - CONTROL RODS (SEE TYPE-46).
  - EXTERNAL COVER.

F	UPDATED TYPE NO.	11/8/2023	UG		
E	UPDATED NOTES	09/12/2023	UG		
REV.	DESCRIPTION	DATE:	BY:	CHKD:	APPD:



**Bellows Systems**

CAGE CODE: 22727

**BELLOWS SYSTEMS, INC.**  
Houston, TX  
www.bellows-systems.com

SINGLE EXPANSION JOINT  
TYPE SU-36 SPECIFICATION SHEET