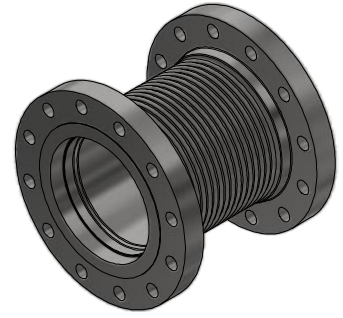
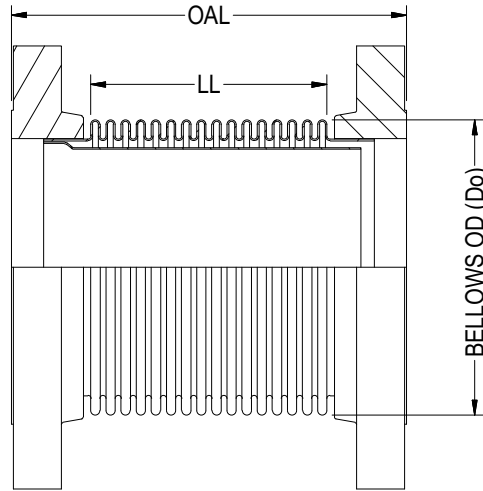


# TYPE-26



ISOMETRIC VIEW

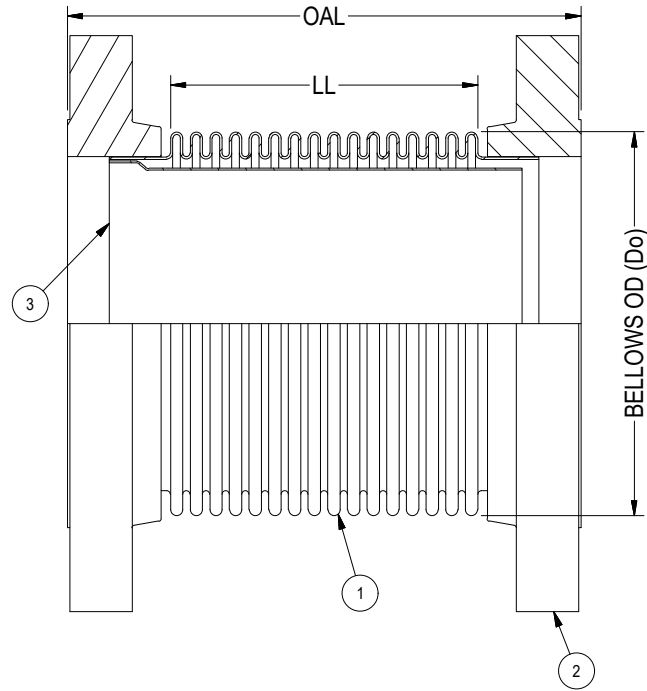
PIPE SIZE	BELLOWS OD (Do)	LIVE LENGTH (LL)	OVERALL LENGTH (OAL)
1	1.63	3.75	6.00
1	1.60	5.76	8.00
1.25	2.05	3.73	6.00
1.25	2.00	5.73	8.00
1.5	2.30	3.46	6.00
1.5	2.30	5.43	8.00
2	2.95	3.19	6.00
2	2.89	5.23	8.00
2.5	3.50	2.84	6.00
2.5	3.50	4.84	8.00
3	4.13	4.43	6.00
3	4.30	2.49	8.00
3.5	4.90	2.29	6.00
3.5	4.88	4.25	8.00
4	5.50	2.02	6.00
4	5.50	8.04	12.00
4	5.50	19.94	24.00
5	6.50	7.80	12.00
5	6.50	19.74	24.00
6	7.60	7.67	12.00
6	7.60	19.62	24.00
8	10.00	2.66	8.00
8	10.00	6.94	12.00

PIPE SIZE	BELLOWS OD (Do)	LIVE LENGTH (LL)	OVERALL LENGTH (OAL)
8	9.80	18.66	24.00
10	11.90	2.45	8.00
10	12.00	6.57	12.00
10	12.00	18.45	24.00
12	13.90	2.02	8.00
12	13.90	6.10	12.00
12	14.25	17.89	24.00
14	15.50	5.78	12.00
14	15.50	17.67	24.00
16	17.50	11.19	18.00
16	17.50	17.23	24.00
18	19.50	4.77	12.00
18	19.25	10.80	18.00
18	19.50	16.77	24.00
20	21.50	4.35	12.00
20	21.65	10.28	18.00
20	21.65	16.28	24.00
22	23.80	3.96	12.00
22	23.70	9.42	18.00
22	23.70	14.94	24.00
24	25.90	3.45	12.00
24	25.60	9.32	18.00
24	25.65	15.33	24.00

**NOTES:**

1. FLANGES ARE OF 300# RFSO. (ANSI B16.5 BOLT PATTERN)
2. FLANGE MATERIAL: ASTM A-105. FOR OTHER OPTIONAL MATERIAL PLEASE CONTACT BSI.
3. OAL IS BASED ON LIVE LENGTH. FOR OTHER OPTIONAL LENGTH PLEASE PROVIDE THEM IN THE SPECIFICATION SHEET.
4. BELLOWS MATERIAL: ASTM A-240 GRADE 304. OTHER MATERIALS (STAINLESS STEEL, NICKEL ALLOYS ETC.) ARE AVAILABLE ON REQUEST.
5. AVAILABLE IN 1 PLY, 2 PLY (STD) OR 3 PLY DESIGNS.
6. SPECIFY DESIGN/OPERATING TEMPERATURE & PRESSURE IN PAGE 2.
7. FOR MOVEMENTS AND LIFE CYCLE REFER TO BELLOWS CATALOG OR CONTACT BSI ENGINEERING.

				 <b>Bellows Systems</b>		BELLOWS SYSTEMS, INC. Houston, TX <a href="http://www.bellows-systems.com">www.bellows-systems.com</a>	
						SINGLE EXPANSION JOINT STD. TYPE-26 W/ LINER & 300# RFSO FLG	
D	UPDATED NOTES	09/12/2023	UG	CAGE CODE: 22727		DRAWING NUMBER: 130-CAT-0026	
REV.	DESCRIPTION	DATE:	BY:	CHKD:	APPD:	SCALE: AS SHOWN	SHEET#: 1 OF 2
THIS DRAWING AND ALL OF THE INFORMATION HEREIN ARE THE SOLE PROPERTY OF BELLOWS SYSTEMS, INC. AND MAY NOT BE REPRODUCED OR DISTRIBUTED WITHOUT THE EXPRESS WRITTEN CONSENT OF BELLOWS SYSTEMS, INC. (BSI).				SHEET SIZE: 8.5" x 11"		DRAWN BY: U GULATI DATE: 03/13/2023	



		1	2	3	4
DIM.:	PIPE/ NOMINAL SIZE:				
	OVERALL LENGTH (OAL):				
DESIGN:	PRESSURE:				
	TEMPERATURE:				
MOV. & LIFE CYLS:	AXIAL COMPRESSION:				
	AXIAL EXPANSION:				
	LATERAL:				
	ANGULAR:				
MATL'S.:	NO. OF CYCLES:				
	① BELLOWS:				
	② FLANGE:				
	③ LINER:				
<b>DESIGN CODES/STANDARDS:</b> (EJMA/ ASME SECT VII DIV I/ ASME B 31.1/ ASME B 31.3)					
<b>APPLICATION NOTES:</b>					
<b>QUANTITY:</b>					

- OPTIONAL FEATURES:**
- WITHOUT FLOW LINER (SEE TYPE-06).
  - CONTROL RODS (SEE TYPE-46).
  - EXTERNAL COVER.

 <b>Bellows Systems</b>						<b>BELLOWS SYSTEMS, INC.</b> Houston, TX <a href="http://www.bellows-systems.com">www.bellows-systems.com</a>	
						SINGLE EXPANSION JOINT TYPE-26 SPECIFICATION SHEET	
D	UPDATED NOTES	09/12/2023	UG			CAGE CODE: 22727	
REV.	DESCRIPTION	DATE:	BY:	CHKD:	APPD:	DRAWN BY:	SCALE:
						U GULATI	AS SHOWN
THIS DRAWING AND ALL OF THE INFORMATION HEREIN ARE THE SOLE PROPERTY OF BELLOWS SYSTEMS, INC. AND MAY NOT BE REPRODUCED OR DISTRIBUTED WITHOUT THE EXPRESS WRITTEN CONSENT OF BELLOWS SYSTEMS, INC. (BSI).				SHEET SIZE: 8.5" x 11"	DATE: 03/13/2023	DRAWING NUMBER: 130-CAT-0026	SHEET#: 2 OF 2
						REV. D	