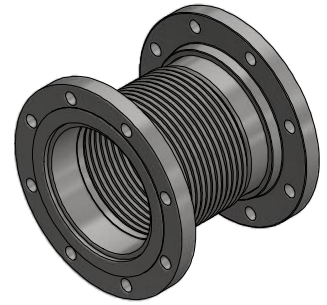
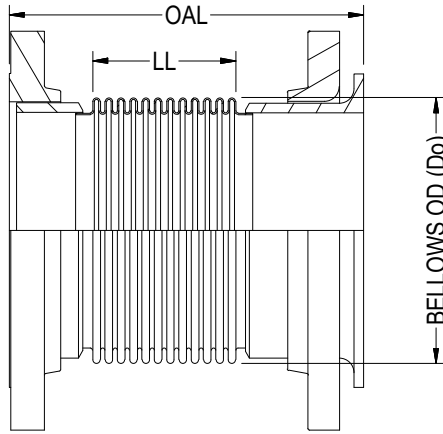


# TYPE-16



ISOMETRIC VIEW

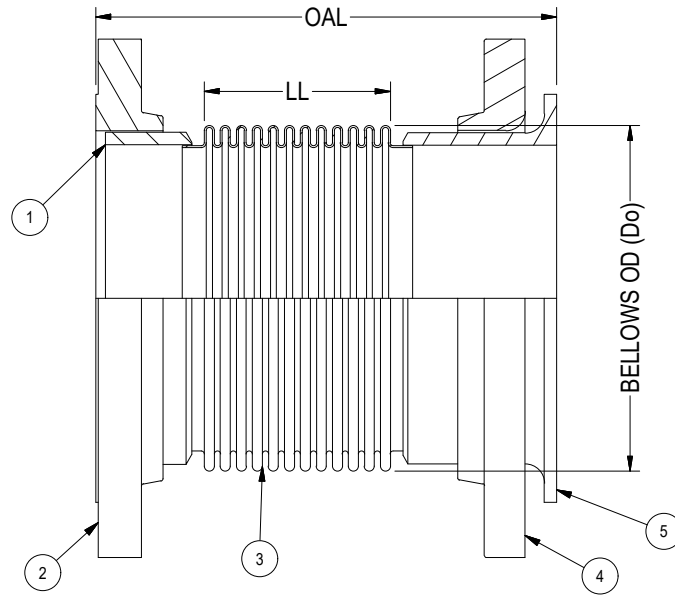
PIPE SIZE	BELLOWS OD (Do)	LIVE LENGTH (LL)	OVERALL LENGTH (OAL)
1	1.50	1.83	6.00
1.25	1.80	1.80	6.00
2	2.50	7.05	12.00
2	2.47	11.08	16.00
2	2.40	15.11	20.00
2.5	3.00	1.88	7.00
2.5	3.00	6.92	12.00
2.5	3.00	10.89	16.00
2.5	3.00	14.90	20.00
3	3.80	1.75	7.00
3	3.75	6.85	12.00
3	3.75	10.76	16.00
3	3.75	14.78	20.00
3.5	4.40	1.29	7.00
3.5	4.40	6.23	12.00
3.5	4.40	10.17	16.00
3.5	4.40	14.13	20.00
4	4.95	1.24	7.00
4	4.95	6.19	12.00
4	4.95	10.12	16.00
4	4.80	14.17	20.00
5	5.80	1.13	7.00
5	5.80	6.12	12.00
5	5.80	10.07	16.00
5	5.80	14.04	20.00
6	7.00	5.44	12.00

PIPE SIZE	BELLOWS OD (Do)	LIVE LENGTH (LL)	OVERALL LENGTH (OAL)
6	7.00	9.48	16.00
6	7.00	13.34	20.00
8	9.00	4.84	12.00
8	9.00	8.78	16.00
8	9.00	12.73	20.00
10	11.00	3.65	12.00
10	11.00	7.63	16.00
10	11.00	11.57	20.00
12	13.00	2.36	12.00
12	13.00	6.34	16.00
12	13.00	10.33	20.00
14	14.13	2.26	12.00
14	14.13	6.28	16.00
14	14.13	10.28	20.00
16	16.50	1.95	12.00
16	16.50	6.01	16.00
16	16.50	10.04	20.00
18	18.50	1.79	12.00
18	18.50	5.84	16.00
18	18.50	9.86	20.00
20	20.50	1.63	12.00
20	20.50	5.65	16.00
20	20.50	9.67	20.00
24	24.50	1.33	12.00
24	24.60	5.30	16.00
24	24.80	9.31	20.00

NOTES:

1. FLANGES ARE OF 300# RF50. (ANSI B16.5 BOLT PATTERN)
2. FLANGE MATERIAL: ASTM A-105. FOR OTHER OPTIONAL MATERIAL PLEASE CONTACT BSI.
3. PIPE WELD END WALL THICKNESS IS BASED ON STD./SCH. ALTERNATIVE SIZES AVAILABLE ON REQUEST.
4. PIPE END MATERIAL: ASTM A106 B. FOR OTHER OPTIONAL MATERIAL PLEASE CONTACT BSI.
5. LAP JOINT STUB END MATERIAL: ASTM A-36. FOR OTHER OPTIONAL MATERIAL PLEASE CONTACT BSI.
6. OAL IS BASED ON LIVE LENGTH. FOR OTHER OPTIONAL LENGTH PLEASE PROVIDE THEM IN THE SPECIFICATION SHEET.
7. BELLOW MATERIAL: ASTM A-240 GRADE 304. OTHER MATERIALS (STAINLESS STEEL, NICKEL ALLOYS ETC. ) ARE AVAILABLE ON REQUEST.
8. AVAILABLE IN 1 PLY, 2 PLY (STD) OR 3 PLY DESIGNS.
9. SPECIFY DESIGN/OPERATING PRESSURE & TEMPERATURE IN PAGE 2.
10. FOR MOVEMENTS AND LIFE CYCLE REFER TO BELLOWS CATALOG OR CONTACT BSI ENGINEERING.

				 <b>Bellows Systems</b>		<b>BELLOWS SYSTEMS, INC.</b> Houston, TX <a href="http://www.bellows-systems.com">www.bellows-systems.com</a>	
						SINGLE EXPANSION JOINT STD. TYPE-16 W/ 300# RF50, FIXED & FLOATING FLG	
E	UPDATED NOTES	09/12/2023	UG	CAGE CODE: 22727		DRAWING NUMBER: 130-CAT-0016	SHEET#: 1 OF 2
REV.	DESCRIPTION	DATE:	BY:	CHKD:	APPD:	SCALE: AS SHOWN	REV. E
THIS DRAWING AND ALL OF THE INFORMATION HEREIN ARE THE SOLE PROPERTY OF BELLOWS SYSTEMS, INC. AND MAY NOT BE REPRODUCED OR DISTRIBUTED WITHOUT THE EXPRESS WRITTEN CONSENT OF BELLOWS SYSTEMS, INC. (BSI).				SHEET SIZE: 8.5" x 11"	DRAWN BY: U GULATI	DATE: 03/13/2023	



		1	2	3	4
<b>DIM.:</b>	PIPE/ NOMINAL SIZE:				
	OVERALL LENGTH (OAL):				
<b>DESIGN:</b>	PRESSURE:				
	TEMPERATURE:				
<b>MOV. &amp; LIFE CYLS:</b>	AXIAL COMPRESSION:				
	AXIAL EXPANSION:				
	LATERAL:				
	ANGULAR:				
	NO. OF CYCLES:				
<b>MATL'S.:</b>	① PIPE END:				
	② FLANGE:				
	③ BELLOWS:				
	④ LAP JOINT FLANGE:				
	⑤ STUB END:				
<b>DESIGN CODES/STANDARDS:</b> (EJMA/ ASME SECT VII DIV I/ ASME B 31.1/ ASME B 31.3)					
<b>APPLICATION NOTES:</b>					
<b>QUANTITY:</b>					

**OPTIONAL FEATURES:**

1. FIXED FLANGE (SEE TYPE-06).
2. FLOW LINER (SEE TYPE-26).
3. CONTROL RODS (SEE TYPE-46).
4. EXTERNAL COVER.

 <b>Bellows Systems</b>						<b>BELLOWS SYSTEMS, INC.</b> Houston, TX <a href="http://www.bellows-systems.com">www.bellows-systems.com</a>	
						SINGLE EXPANSION JOINT TYPE-16 SPECIFICATION SHEET	
E	UPDATED NOTES	09/12/2023	UG			CAGE CODE: 22727	
REV.	DESCRIPTION	DATE:	BY:	CHKD:	APPD:	DRAWING BY:	DRAWING NUMBER:
						U GULATI	130-CAT-0016
THIS DRAWING AND ALL OF THE INFORMATION HEREIN ARE THE SOLE PROPERTY OF BELLOWS SYSTEMS, INC. AND MAY NOT BE REPRODUCED OR DISTRIBUTED WITHOUT THE EXPRESS WRITTEN CONSENT OF BELLOWS SYSTEMS, INC. (BSI).				SHEET SIZE: 8.5" x 11"	DATE: 03/13/2023	SCALE: AS SHOWN	SHEET#: 2 OF 2
						REV.:	E